

Bringing Efficiency to Your Business through IT

EDI

ERP

B2B INTEGRATION

BUSINESS CONTINUITY

BUSINESS INTELLIGENCE

WAREHOUSE MANAGEMENT

PRIVATE CLOUD & MANAGED SERVICES



LES SERVICES DE CONSULTATION
NAMTEK
CONSULTING SERVICES



TABLE OF CONTENTS

Introduction	3
Our mission	3
OUR EXPERTISE	4
IT Consulting & Analysis	4
In-House Software Development	4
Systems Integration	4
IT Support	4
Private Cloud Hosting & Managed Services	5
EDI Fully Managed Service	5
EDI Web Service	5
E-commerce Integration Services	5
SaaS and PCs Data Protection	6
Business Continuity Services	6
Industry 4.0 Integration	6
Compliance Services.....	6
SOFTWARE SOLUTIONS	7
B2B Integration	7
E-commerce Integration	8
Analysis & Reporting	10
ERPWizard	11
ERPWizard add-on modules	12
<i>a. project management</i>	12
<i>b. product lifecycle management</i>	12
<i>c. mobile warehouse system</i>	13
Business Continuity	14
FactoryEye for industry 4.0	15
Industries Served	16
Contact Us	17



INTRODUCTION

Namtek Consulting Services is a leading Canadian IT firm, providing the latest software solutions and IT services to various industries in businesses of small and medium sizes. It all began in 2000, in Québec, Canada, with an experienced Software Engineer, EDI & Integration Specialist and IT Business Consultant, Pierre Namroud. His goal was to provide flexible, affordable yet high-quality business systems to Small and Medium Enterprises. The purpose is to improve their efficiency and to stream their processes. Pierre, along with his team of IT experts, worked to ensure that even the smallest companies were well equipped with a powerful management system that fits their budget. The belief, ingrained in the company's values and mission, is that every business has unique IT needs that can only be truly met by treating each customer as a valued partner. With these goals and beliefs, Namtek Consulting Services was born.

Today, Pierre, along with his team of knowledgeable and passionate IT experts, offer various services to a customer base scattered across the globe, continuously bridging the gap between Business and Technology.

Namtek Consulting Services is focused on offering premium, efficient solutions and services through a customized experience. The approach is to always *integrate*, *simplify* and *improve*.

OUR MISSION

Namtek Consulting Services' mission is to be present for customers throughout their e. experience. The team works hard so that customers can easily reach them for support and training, and so these businesses can:

- Reduce operating and labor costs
- Increase efficiency and profitability
- Simplify and automate business processes
- Respond easily and quickly to new business realities and new customer or partner requests
- Integrate and exchange data electronically with business partners
- Meet the challenges of an ever-changing business environment





OUR EXPERTISE

IT CONSULTING & ANALYSIS

Our IT Consultants find ways to improve and streamline a company's management processes by focusing on current business challenges and objectives. The goal is to offer practical advice and solutions so that customers can boost efficiency and streamline processes using technology, specific to their company size, budget, and resources available.



IN-HOUSE SOFTWARE DEVELOPMENT

We offer software development and implementation services to allow customers to benefit from using front-line technologies, while saving time and money. Some of our completed enterprise software projects include the development and implementation of management solutions such as ERP, WIMS and more.

SYSTEMS INTEGRATION

Due to our high-level expertise and experience in software integrations, we offer Systems Integration services. Our team works with companies' CEO and their IT teams to integrate their management systems to reduce the disconnect between multiple individual systems. Consequently, they reduce manual data entry.



IT SUPPORT

Support and User Training services ensure that customers are never left alone after any system implementation. Our support team is available via chat, email, and phone.



PRIVATE CLOUD HOSTING & MANAGED SERVICES

We offer customers the ability to host their software solutions in our private Cloud, saving them on expensive hardware costs and on lengthy system implementations.

The service provider will oversee the monitoring, the security, and maintenance of the company's cloud environment, to improve the efficiency of business operations.



EDI FULLY MANAGED SERVICE

We offer a secure process of exchanging business documents electronically - either internally or amongst external business partners. This enables companies to reduce large amounts of paperwork, decrease errors and bring real-time information at a faster rate.

EDI WEB SERVICE

EDI2XML Web Service, is an HTTP service running over the internet, on EDI2XML own platform that is capable of receiving HTTP requests to translate EDI messages to XML, and XML messages (based on EDI2XML's proprietary format) to EDI.



E-COMMERCE INTEGRATION SERVICES

We offer robust, powerful and a fully managed integration solution between your e-commerce store and all the leading business systems. We can quickly and efficiently set up data exchange with ERP / CRM (customer info, sales orders, order status, inventory quantity data...) at any stage of the development of your online store.



SAAS AND PCS DATA PROTECTION

Our SaaS Data Protection guarantees security for remote users and cloud data. It's a simple solution for robust data protection in **Office 365** and **G Suite**, storing SaaS application data securely in the Datto Cloud.

Our PCs Data Protection is an all-in-one, image-based cloud solution for PCs and laptops, providing backup through full virtualization without additional requirements.



BUSINESS CONTINUITY SERVICES

We offer the latest in Backup and Recovery with our Business Continuity service. It includes on-site real-time data and full machine backup through virtualization as well as off-site backup to the Cloud. The ultimate data protection during a business crisis, such as hardware malfunction, software virus, natural disaster, human error, etc.

INDUSTRY 4.0 INTEGRATION

Our unique manufacturing solution designed specifically for manufacturers, enhances the productivity of your enterprise with complete visibility and up-to-date information on operational processes and key indicators at every stage: Order – production – delivery.



COMPLIANCE SERVICES

Easily meet your company's cybersecurity compliance requirements. Whether an audit is mandatory or not, our Compliance Service empowers SMBs to effortlessly attain and maintain the highest standards of compliance and security without the need for extensive internal resources or compliance expertise.



SOFTWARE SOLUTIONS

B2B INTEGRATION

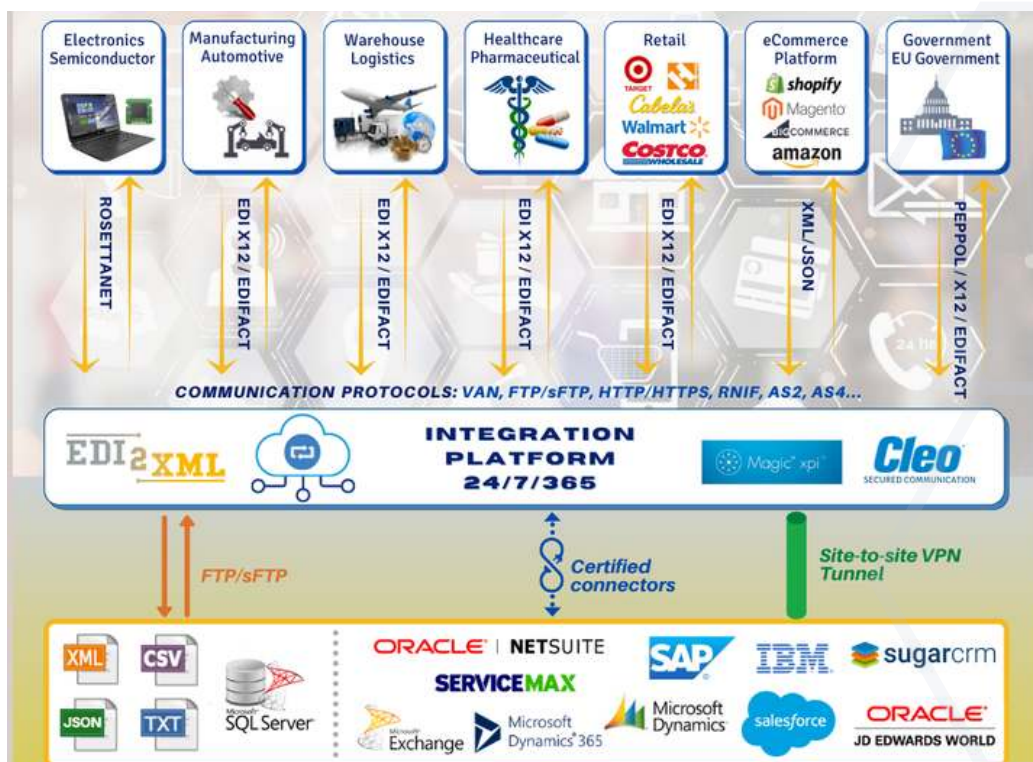


B2B Integration, also known as Electronic Data Interchange "EDI", is the process of exchanging business documents electronically either internally or amongst external business partners. With our EDI2XML Service, companies can securely exchange business documents, such as Purchase Orders, Invoices, Advance Shipping Notices, electronically, through private networks or the Internet, with either external business partners or amongst a company's multiple office locations for internal purposes.

With EDI2XML, businesses can:

- Reduce large amounts of paperwork.
- Decrease data entry errors.
- Save money.
- Bring real-time information to managers in an organization.
- Become compliant with many large retailers.

All exchanged data can then be integrated directly into our ErpWizard Suite, or any other Management System, like Oracle, SAP, Salesforce, etc.





E-COMMERCE INTEGRATION

Our integration solution allows you to automatically exchange data from your online stores with your internal ERP / CRM systems.

We use advanced integration technologies that provide:

- Two-way exchange “eCommerce-ERP”, “ERP-eCommerce”.
- Secured bi-directional data transfer.
- Automatic exchange processing.
- Very stable solution.
- Flexibility and scalability (the ability to expand functionality).
- Work with a large array of data.
- Various connection: eCommerce, EDI, CRM, and other business and accounting systems.





HOW DOES FULLY MANAGED E-COMMERCE INTEGRATION WORK?



We at EDI2XML eliminate the need for manual data entry using **Magic xpi Integration Platform**, we automate the most important business processes, ensuring data exchange between e-commerce store and leading ERP and accounting systems.



- The EDI2XML integration platform **Magic xpi** connects your ERP/business systems with your online store.
- Orders placed on your online store are sent automatically to your business system.
- As you fulfill online orders, Magic xpi extracts shipment data from your ERP and sends it directly to your online store thus your clients always have the latest order status.
- Automatically update inventory information in your online store as frequently as you wish.

We can quickly and efficiently set up data exchange with ERP (customer info, sales orders, order status, inventory quantity data...) at any stage of the development of your online store:



- even before the launch of the online store;
- when the e-commerce website is already running;
- expand the possibilities of the existing integration;



ANALYSIS & REPORTING

Business Intelligence

by Tableau Software

Start transforming your raw business data into actionable insights that will help your team drive growth and success by integrating the **ErpWizard Suite** with Tableau Software's Business Intelligence solution.

This analytics tool will allow users to produce detailed analyses, reports, and interactive visualizations using customized, easy-to-use, drillable dashboards. They will be able to easily read critical business information at a moment's notice and make informed decisions for the future of the company.

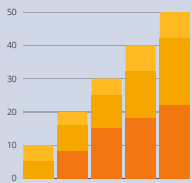




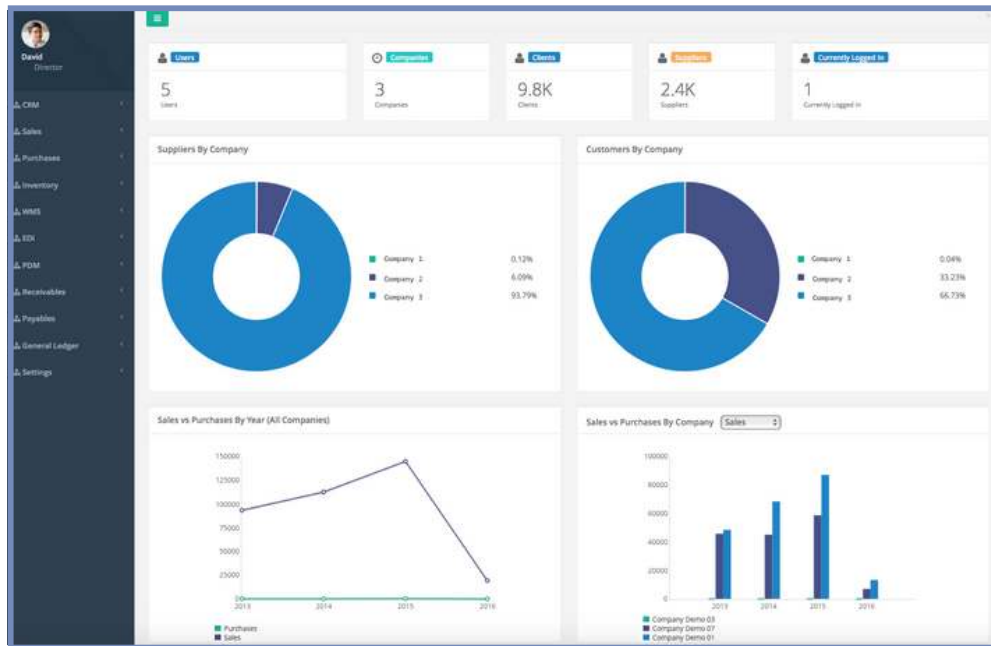
ERPWIZARD



The **ErpWizard** Suite is developed in-house, high-quality Enterprise Resource Planning (**ERP**) software solution. This business management system, offered as a Service (**SaaS**), either in the Cloud or on a client's premises, is used to empower and equip businesses with an affordable, high-tech system, handcrafted to fit the needs of every business.



With flexible modules, this system will streamline a company's processes, improve efficiency, increase profitability, and adapt easily to new business challenges and requests.



BASE MODULES

ACCOUNTING

INVENTORY

SALES

PURCHASES



ERPWIZARD ADD-ON MODULES

A. PROJECT MANAGEMENT

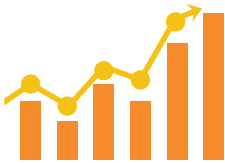


ErpWizard's Project Management system is a cloud-based management software application that allows teams to efficiently collaborate and manage all sorts of projects and tasks under one roof, from anywhere and at any time.



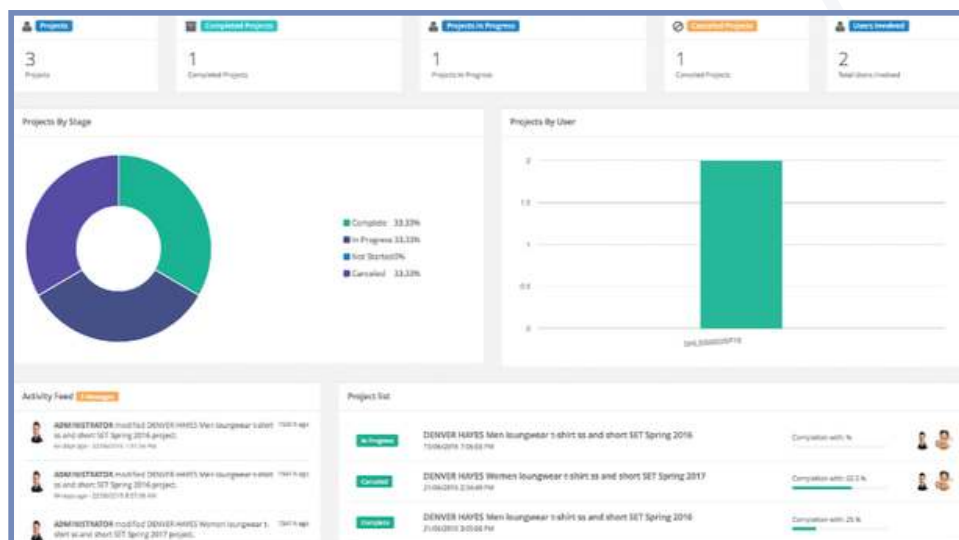
- Mobile & Web-based Solution
- Create & Modify Projects and Tasks
- Assign Projects to Employees and/or Teams
- Attach Files and Images
- Customizable
- Manage Contacts, Users, Products, Services & Facilities
- Leave Comments & Notifications
- Develop & Track Estimated Values versus Actual Values for all resources required

B. PRODUCT LIFECYCLE MANAGEMENT



ErpWizard's **Product Lifecycle Management (PLM)** application allows businesses to optimize, standardize and streamline processes related to Product Development.

With a comprehensive dashboard, users can develop new products easily, while tracking every revision and seeing the stages of completion.





ERPWIZARD ADD-ON MODULES

WIMS 2.0

Wireless Inventory Management Solution

C. MOBILE WAREHOUSE SYSTEM

Easily integrated into the ErpWizard Suite, the WIMS 2.0 application improves the managing and tracking of all Warehouse activities of an enterprise. Only by using a mobile, flexible, real-time inventory data collection system. The application has multi-warehousing capability, employee productivity tracking, bin location and merchandise management. It is customizable to ensure it works for your specific warehousing needs.

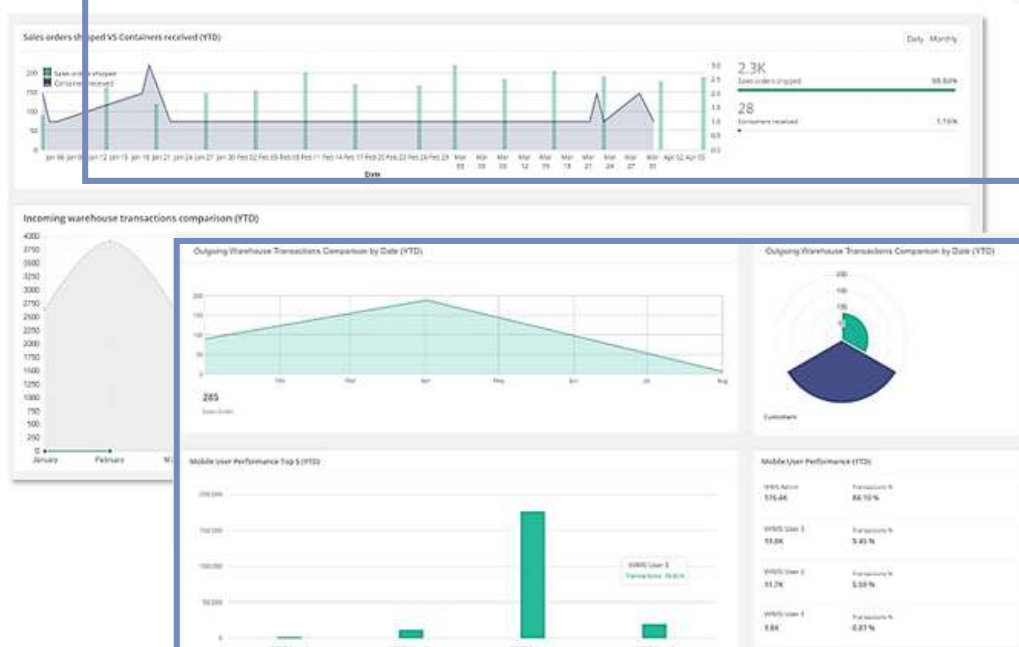


Manufacturers and distributors using WIMS 2.0 can operate as efficiently as possible to ensure excellent customer service, error-free operations, and benefit from cost reductions.

This mobile warehouse management system can:



- provide real-time information (like inventory status)
- remote scan all bar-coded items
- track shipments and merchandise
- track several warehouses (at different locations)
- manage and track the output of employees
- provide access to an accounting component to manage inventory





BUSINESS CONTINUITY

QBR (Quick Backup Recovery) is our Business Continuity solution for enterprises. No matter the industry, this solution provides the required security of a company's data. It's more than just a regular backup and recovery system. QBR has on-site capability to perform real-time data and full machine backup through virtualization as well as off-site backup capability to QBR's secure Canadian Cloud.



This **Business Continuity** and **Disaster Recovery** solution is a company's insurance policy; it ensures that their data is restored to its former state during a business crisis or disaster, with no data loss and little to no downtime. Businesses can continue their operations no matter the crisis.



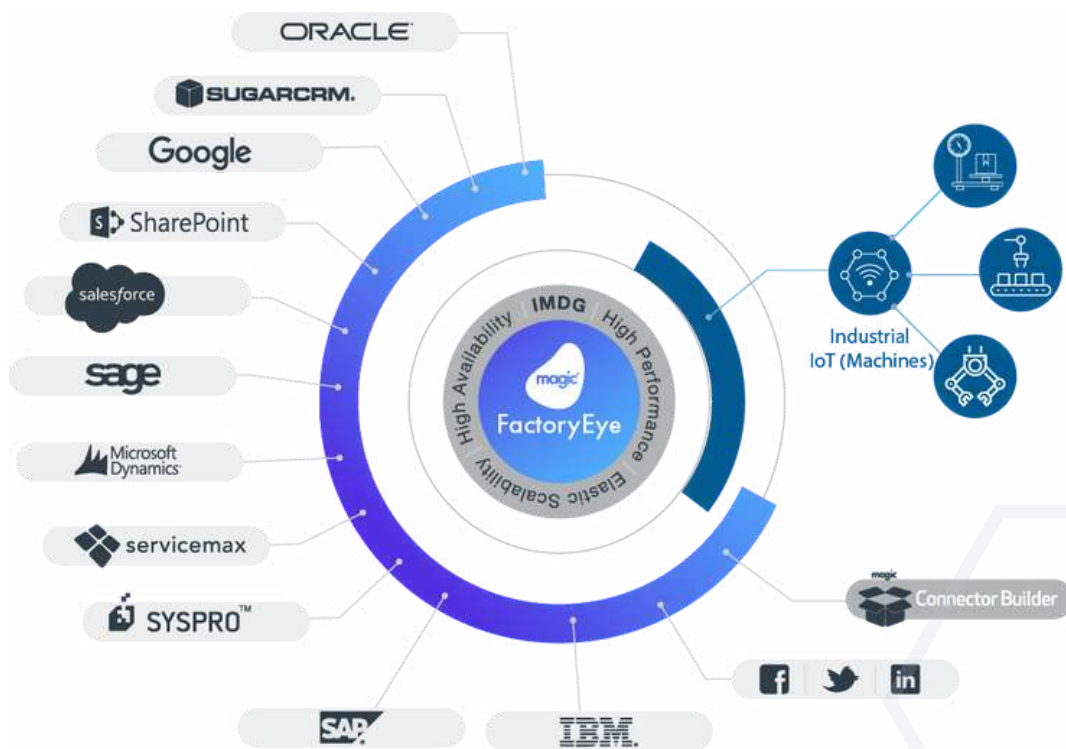
Businesses can now benefit from a simple and quick recovery process of full machines, by retrieving data immediately from their QBR device or accessing it from the Cloud. Company owners can have the confidence in their disaster recovery plan and sleep with the peace of mind that no matter what will happen tomorrow, their business' data will be safe.



FACTORYEYE FOR INDUSTRY 4.0

FactoryEye is a highly productive, flexible, low-code and hybrid platform that seamlessly integrates between manufacturer's legacy core IT systems, cloud systems, and factory machines, collecting and analyzing large data from multiple repositories.

FactoryEye makes all of your disparate and important data visible and easily accessible in real time. Moreover, with FactoryEye you can see the performance of your production equipment in real time, and all this is possible without changing your existing applications and infrastructure.



Our solution Factory Eye gives to manufacturers a lot of benefits:

- Increased productivity
- Reduced material waste
- Improved on-time delivery
- Increased costing accuracy
- Better knowledge preservation
- Better control

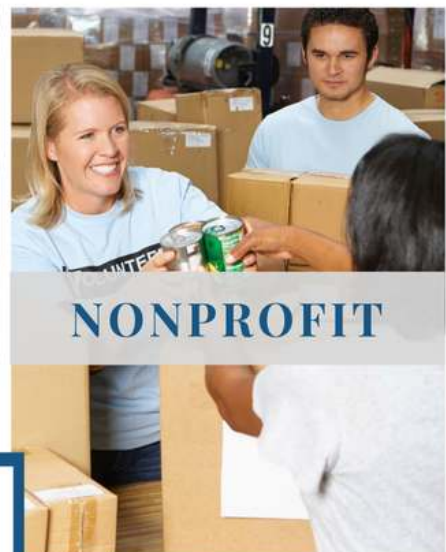
By integrating production machines, business systems and their legacy systems, manufacturers can achieve much greater productivity and efficiency and become more agile and lean.

We implement FactoryEye according to priorities identified together with our client. Our holistic approach draws on best practices and a strategic alliance with [Magic Software](#), a global company that empowers manufacturers with smarter technology to make the smooth transition to Industry 4.0 and maximize business opportunities.

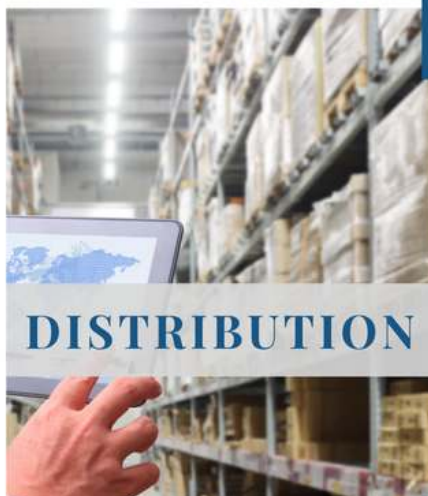


INDUSTRIES SERVED

Due to our extensive software offerings, we have gained experience in various industries. Our main client base can be categorized under the following industries:



INDUSTRIES SERVED





CONTACT US



Namtek Consulting Services

400 Blvd. Curé-Labelle, Suite 304

Laval, QC H7V 2S7

Phone: 450 681-3009

sales@namtek.ca